

# GEUM Integration in PRTG Network Monitor



GEUM—GLOBAL END-USER MONITORING

## GEUM Overview

Global End-User Monitoring (GEUM) enables you to monitor complex, multi-step transactions from an end-user perspective without scripting. With GEUM, quickly troubleshoot web-based performance issues for ALL your internal and customer-facing applications. Use your SQL sensor in your PRTG console to monitor web application performances with PRTG Network Monitor and enhance your monitoring strategy by focusing on end-user's experience.

## Global End User Monitoring Components

### GEUM Recorder

Quickly and easily record complex transactions with no scripting involved. The Recorder lets administrator create a test plan. You can record your actions to web browser and save it to a local XML file. Then HTML sessions can be executed locally or remotely by different GEUM players

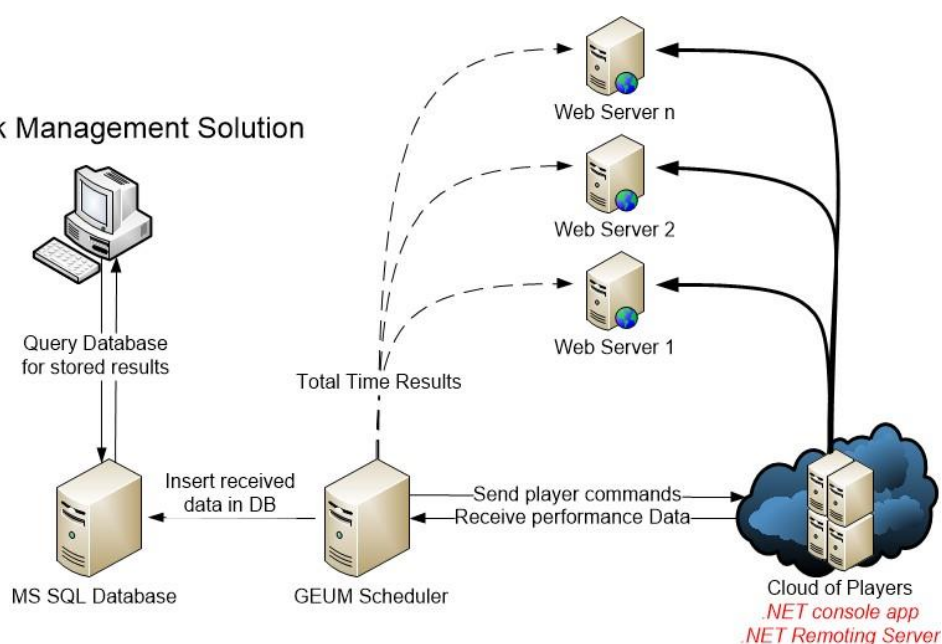
### GEUM Player

Players allow executing different HTML sessions contained in XML files. Thus, the different players carry out the various performances tests as response times.

### GEUM Scheduler

The Scheduler periodically sends command to player computers and receives performance data. These data are stored in SQL database, which can be used to monitor the performance of a web server.

### Network Management Solution



ORSENNA

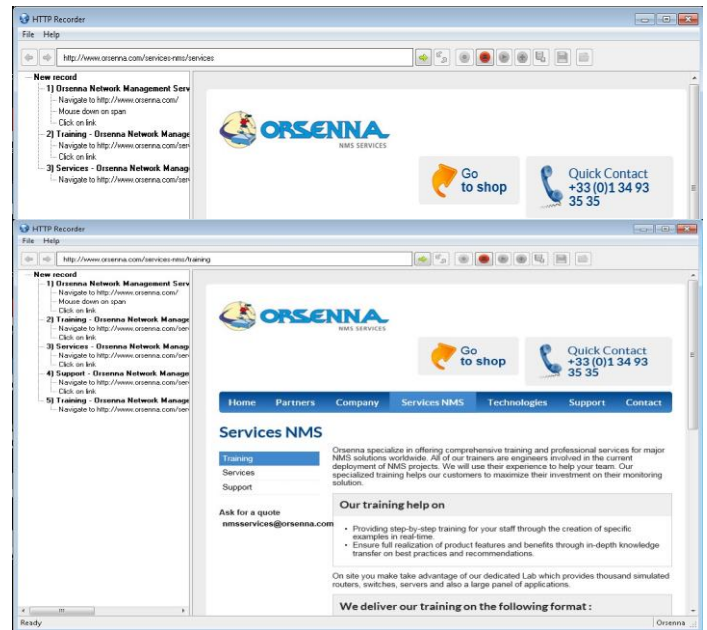
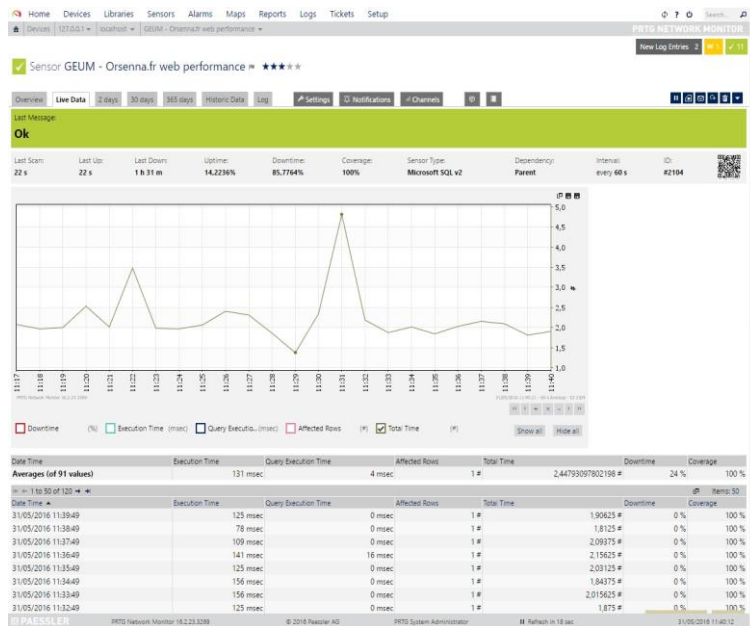
15, rue Croix Castel 78600 Maisons-Laffitte  
Tél. : 01 34 93 35 35 - Fax : 01 34 93 95 75

# GEUM Integration in PRTG Network Monitor



## GEUM Integration in PRTG Network Monitor

You can use Global End-User Monitoring to be informed in real-time when problems arise. Set warnings and custom timing thresholds and get notified automatically when a transaction fails. Access to the result of player latency in your SQL sensor with GEUM Scheduler. Once you have configured your sensor in your PRTG console, it will raise message if any Web server is in a critical state and allows graphing response time or other performances of web applications.



## GEUM Scheduler

GEUM's comprehensive reporting gives insight on how your internal and external web applications and transactions are running. GEUM includes intuitive and easy to use dashboards to deploy your players and give you an overview of your transactions' status.

### Features

- Embedded Remote Player Install
- Up to 50 Players
- SQL Database

