

GEUM Integration in NagiosXI



GEUM Overview

Global End-User Monitoring (GEUM) enables you to monitor complex, multi-step transactions from an end-user perspective without scripting. With GEUM, quickly troubleshoot web-based performance issues for ALL your internal and customer-facing applications. Install GEUM service in your Nagios XI console to monitor web application performances with NagiosXI and enhance your end-user monitoring.

Global End User Monitoring Components



GEUM Recorder

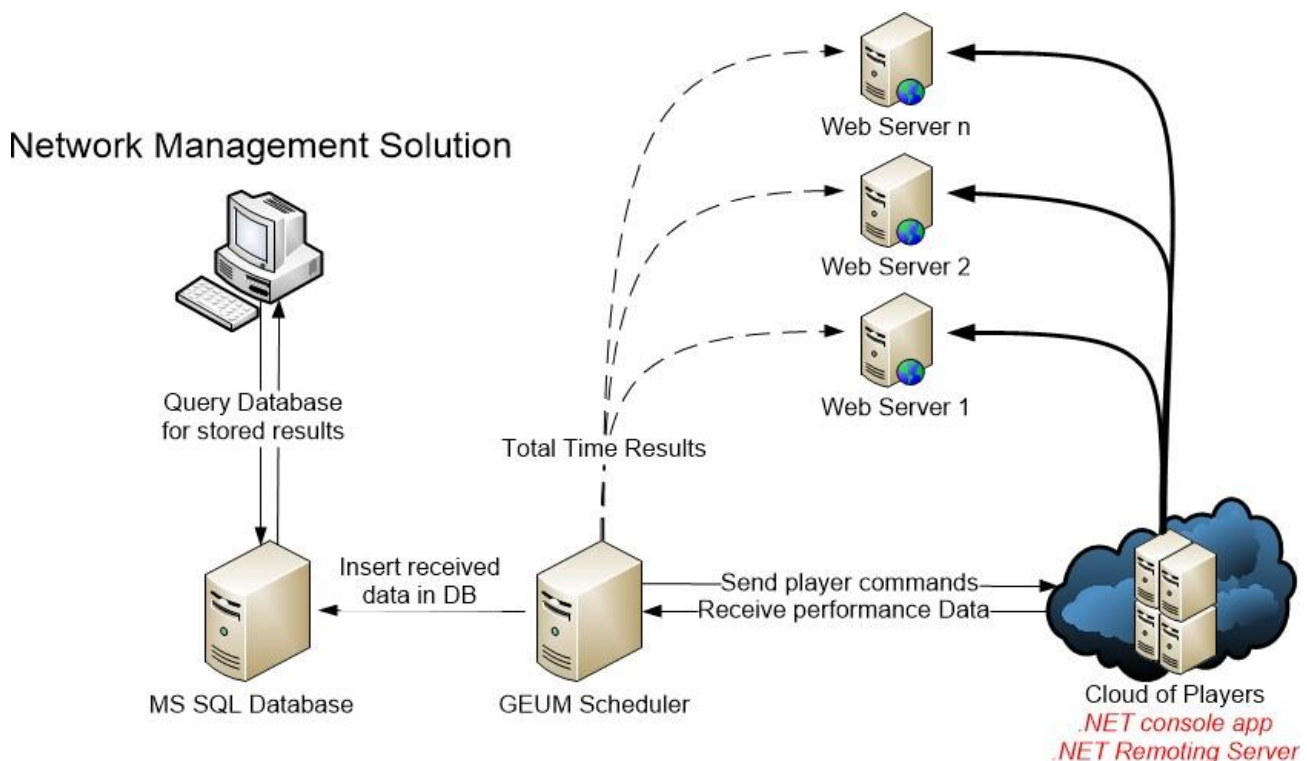
Quickly and easy record complex transactions with no scripting involved. The Recorder lets administrator create a test plan. You can record your actions to web browser and save it to a local XML file. Then HTML sessions can be executed locally or remotely by different GEUM players

GEUM Player

Players allow executing different HTML sessions contained in XML files. Thus, the different players carry out the various performances tests as response times.

GEUM Scheduler

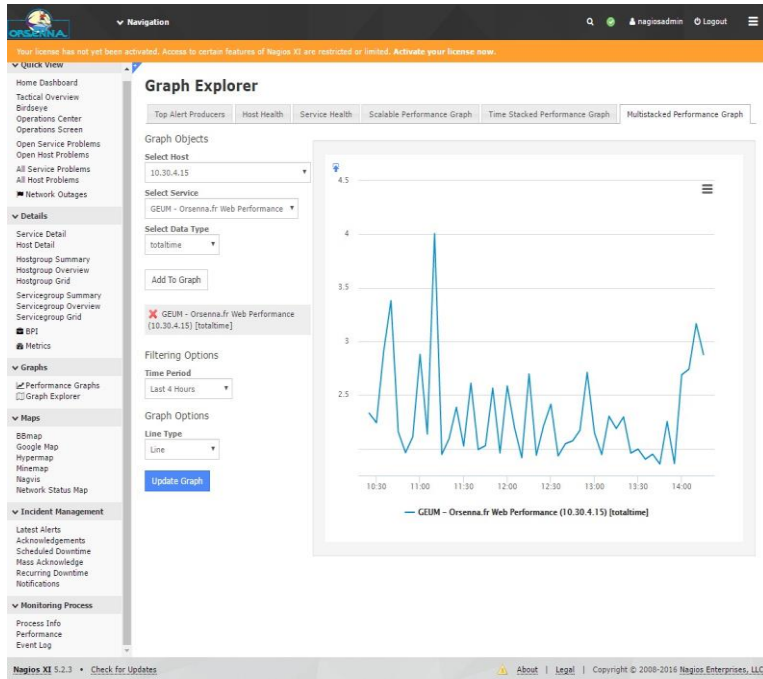
The Scheduler periodically sends command to player computers and receives performance data. These data are stored in SQL database, which can be used to monitor the performance of a web server.



GEUM Integration in NagiosXI

Global End-User Monitoring and NagiosXI

You can use Global End-User Monitoring to be informed in real-time when problems arise. Set warnings and custom timing thresholds and get notified automatically when a transaction fails, indicating an application failure. Access to the result of player latency in your GEUM service with GEUM Scheduler. The GEUM service implemented in NagiosXI raises message if any web server is in a critical state and allows graphing response time or other performances of web applications.



GEUM Scheduler

GEUM's comprehensive reporting gives insight on how your internal and external web applications and transactions are running. GEUM includes intuitive and easy to use dashboards to deploy your players and give you an overview of your transactions' status.

Features

- Embedded Remote Player Install
- Up to 50 Players
- SQL Database

All locations			
Location name	Managed transactions	Current player load	
Localhost	1	100%	
10.30.4.15	1	100%	

All transactions				
Transaction name	IP Location	Interval	Status	Total time
ORSENNAFR	10.30.4.15	0 days 0 hours 1 ...	Success	2.03 s
ORSENNAFR1	10.30.4.15	0 days 0 hours 1 ...	Success	2.16 s

