



**ORSENNA**  
NMS SERVICES



Contact

**+33 (0)1 34 93 35 35**

**[nmsservices@orsenna.com](mailto:nmsservices@orsenna.com)**

## PRTG Training Standard, Pro & Expert

 **PAESSLER**  
the network monitoring company



### Summary

The offers	p.2/3
Training Content	
- Overview	p.4
- PRTG General Presentation	p.4
- PRTG Detailed Presentation	p.4
- Integrated Model	p.5
- Engineering	p.5
Training Center	
- Prerequisites	p.6
- Languages	p.6
- Environment	p.6
- Access	p.7
- Hours - Lunch	p.7
Training On-Site	
- Prerequisites	p.8-9
Remotely	p.9



### INTRODUCTION

#### Your needs :

- ⇒ **Install** a network monitoring solution.
- ⇒ **Check** the efficiency of the monitoring in place.
- ⇒ **Consolidate** your knowledge of the product.

#### We provide :

- ⇒ **Customized trainings** regards your environment.
- ⇒ **Project management** proven in multiple companies.
- ⇒ **An interactive training** with the establishment of a model by yourself with the help of the trainer.

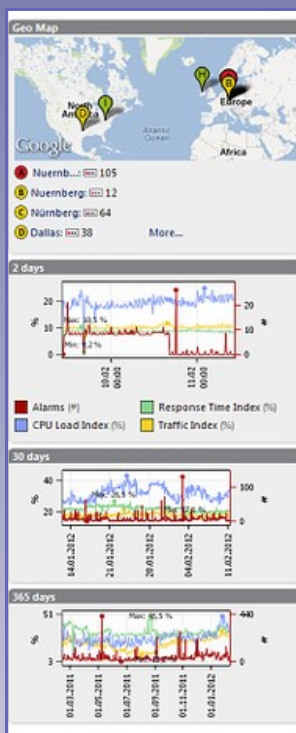
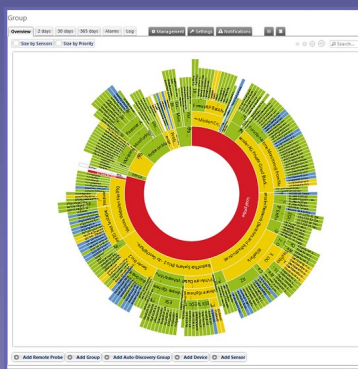
This document have no legal value and ORSENNA reserves the right to append or modify it without prior warning or notice .

**ORSENNA - NMS Services**

15, Rue Croix Castel - 78600 Maisons Laffitte - France  
Tél : +33 (0)1 34 93 35 35 - Fax : +33 (0)1 34 93 95 75  
[www.orsenna.com](http://www.orsenna.com)

## PRTG Training

Orsenna provides you the best training concerning Monitoring, according to your profile and your needs.



Title	Profile
Manager	Standard / Pro
Installer	Pro / Expert
Network Administrator	Expert
System Administrator	Expert
Level 1 Technician	Standard
Level 2 Technician	Pro / Expert

The training can be done in French or English.

### Offers

- \* The **Standard** Training (1 day) will provide you an overview of the characteristics and advantages of the product that you can use concerning the environment you monitor.
- \* The **Pro** Training (2 days) starts by giving you a precise understanding of the protocol SNMP (Simple Network Management Protocol) and the other protocols used in monitoring (WMI, NRPE, JMX, ..). This training will give you an overview of the product and the elements around. With the lab, the students will be able to practice strongly and customize the NMS.
- \* The **Expert** Training (3 Days) is recommended to the people looking for special skills and knowledge in the monitoring field. Every step of the product will be treated, starting from the SNMP Protocol, until the analysis of the traffic and the customization of sensors. Some time will also be dedicated to the customization of the Customer NMS.

Standard  
1 day

Pro  
2 days

Expert  
3 days

## PRTG Training

### The locations

- \* Our Training Center : Our training site provides everything that we need to monitor network devices, servers, applications. You are welcome here to receive the best training (Max 5 Participants).
- \* On-Site : This training can be customized based on the skills of the students. On demand, we can use the customer environment instead of our lab. (Max 5 Attendees).
- \* Remotely : Training with remote sessions to our environment or to yours. It allows to decrease significantly the costs. This training can also be customized to your needs.

### Offer per Profile

You can choose between different modules the training that you prefer.

Canevas	Monitoring Overview	PRTG General Presentation	PRTG Detailed Presentation	Predefined Model	Engineering
Modules	A	B	C	D	E
Duration (information)	2h	4h	4h	2-3h	6h
Standard (1 day) Modules BD (~6h)		X		X	
Pro (2 days) Modules ABCD (~12h)	X	X	X	X	
Expert (3 days) Modules ABCDE (~18h)	X	X	X	X	X

**NB :** The training can't accept more than **5 attendees** to keep the quality of the course.

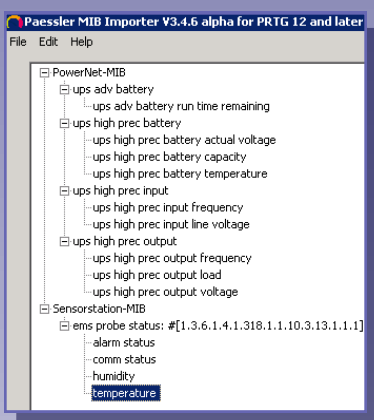
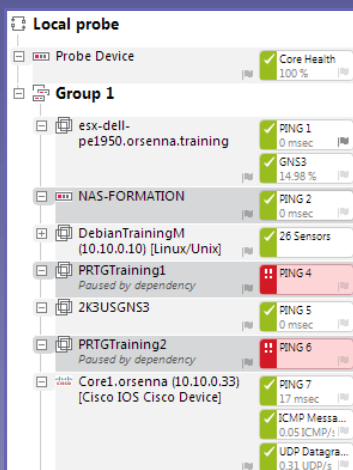
If you need to practice on the software, we provide you in some modules this opportunity.

Here is an example of the training :

- \* Monitoring Overview (A)
- \* PRTG General Presentation (B)
- \* PRTG Detailed Presentation (C)
- \* Predefined Model (D)

**Total = 2 days of training.**

## PRTG Training



These courses can be tailored according to the initial level and the specific needs of the trainees. The training may be provided in French or English.

Each module includes a theoretical part and a practical part so that you can use technology and software.

### Training Content :

#### ⇒ Overview of the monitoring (A)

- The market of Monitoring.
- Protocols related to monitoring :
  - SNMP
  - WMI
  - Syslog
  - Trap SNMP
  - Netflow
  - IPSLA...
- Project study & integration

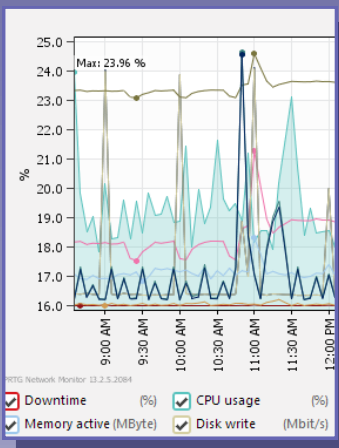
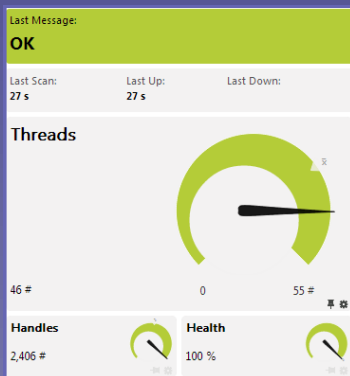
#### ⇒ PRTG General Presentation (B)

- Validation Prerequisites.
- Definition of network objects.
- Discovery of equipments (Device Types).
- Monitor Network and System Devices.
- Device and Group Management.
- Active Sensors (ICMP, SNMP, TCP, Services, Scripting).
- Passive Sensors (SNMP Traps, Syslogs, Windows Events).
- Alarms and Notifications.

#### ⇒ PRTG Detailed Functionnalities (C)

- Report Management.
- Backup/Restore Management.
- Web configuration and customization.
- Dependencies.
- Manual Mapping management.
- Integrate MIB files.
- Specific monitored elements.
- Distributed architectures.
- Traffic Analysis (Netflow, Packet Sniffer)
- VoIP (IP SLA)
- Virtualization (Hyper-V, VMware...)

## PRTG Training



### Training Content :

#### ⇒ Installing and Configuring a predefined model (D)

- Switching and Routing devices integration + sensors.
  - CPU.
  - Memory.
  - Hardware Status (Power, FAN, Temperature...).
  - Interface Status.
  - Interface Utilization.
- System devices integration + sensors :
  - CPU.
  - Disk
  - Memory.
  - Hardware Status (Power, FAN, Temperature...).
  - TCP port checks.
  - Windows Services and Process.
- Customization:
  - Customized sensors
  - Maps
  - Dashboards
  - Thresholds

#### ⇒ Engineering (E)

We can assist you to implement some fonctionnalités and specific elements in your environment.

Search directly	Monitor What?	Target System Type?	Technology Used?
<input type="text"/>	<input type="checkbox"/> Availability/Uptime	<input type="checkbox"/> Windows	<input type="checkbox"/> Ping
	<input type="checkbox"/> Bandwidth/Traffic	<input type="checkbox"/> Linux/macOS	<input type="checkbox"/> SNMP
	<input type="checkbox"/> Speed/Performance	<input type="checkbox"/> Virtualization OS	<input type="checkbox"/> WMI
	<input type="checkbox"/> CPU Usage	<input type="checkbox"/> File Server	<input type="checkbox"/> Performance Counters
	<input type="checkbox"/> Disk Usage	<input type="checkbox"/> Email Server	<input type="checkbox"/> HTTP
	<input type="checkbox"/> Memory Usage	<input type="checkbox"/> SQL Server	<input type="checkbox"/> SSH
	<input type="checkbox"/> Hardware Parameters		<input type="checkbox"/> Packet Sniffing
	<input type="checkbox"/> Network Infrastructure		<input type="checkbox"/> NetFlow, sFlow, jFlow
	<input type="checkbox"/> Custom Sensors		

## PRTG Training

### Training Center

Our center has all the equipment to provide practical training.

### Prerequisites

To insure an optimal confort, **we provide a thin client per participant** to access the training environment. In option, every attendee can bring a laptop running Windows.

If the monitoring solution is already in place in the company, a remote access on this environment can allow to answer faster to your technical questions.

### Languages

The training can be done in both languages (**English – French**).

### Environment

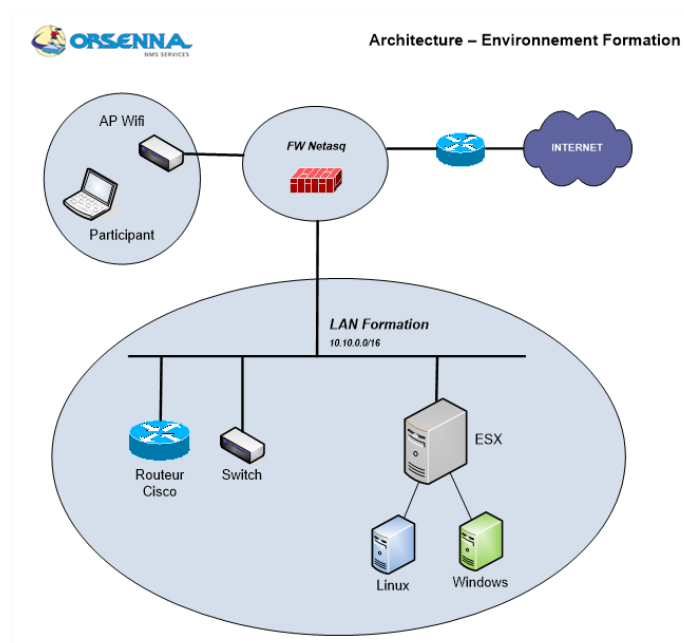
A wireless internet access will be available.

A remote access to our training platform will be provided to every attendee.

The platform has:

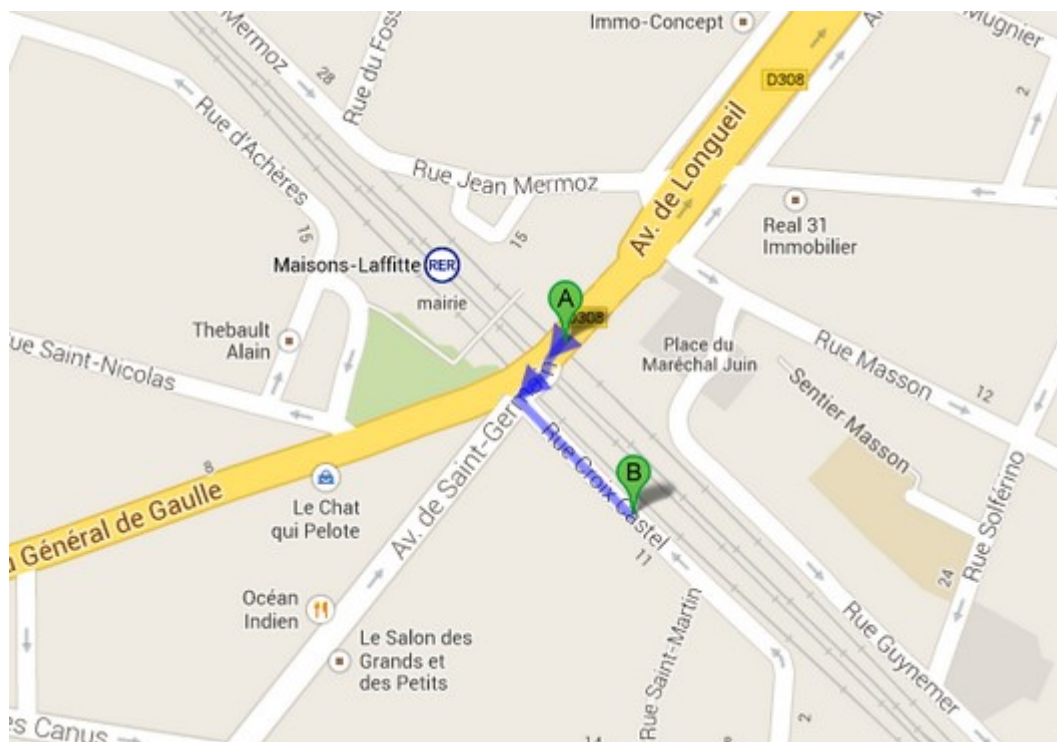
- \* Access to different network equipments (Routers, Switches) by Ping, SNMP, SSH.
- \* Access to different server types by Ping, SNMP and WMI
- \* Access to Linux environments

The training documents will be distributed in a PDF format.



## PRTG Training

### Access the training facilities



#### **Address (B) :**

ORSENNA  
15 Rue Croix Castel  
78600 MAISONS LAFFITTE  
France

Tel : +33 1 34 93 35 35  
Fax : +33 1 34 93 95 75  
Mail : nmsservices@orsenna.com

#### **Transport :**

##### Coming from Paris – La Défense :

RER A - direction Cergy or Poissy => Stop **Maisons Laffitte (A)** (15 min)  
=> <http://ratp.fr>

### Hours - Lunch

The attendees are welcome to the building at 9:00 AM. The classes start at 9:30 AM and finish at 5:00 PM.

The training includes breakfast, lunch and coffee breaks.



## PRTG Training

### Training On-Site

We can also perform the training in different facilities for geographical, technical or budget reasons. The prerequisites are below :

The trainer has the following tools:

- \* Training Documentation in numeric format
- \* NMS standalone on a server
- \* Linux Server on a server
- \* Cisco Router (Monitoring, IP SLA , Netflow)
- \* Netflow simulator software
- \* Syslog software
- \* Wireshark
- \* Snare

It allows us to be autonomous for the training, independently of the training room ressources.

### Prerequisites for the training room

To improve the training quality and the interaction with the attendees, it is recommended to have the following elements:

- \* 1 Environment per attendee with an autonomous installation:
  - Evaluation licences can be provided by Orsenna on demand.
- \* Access to Network equipments by SNMP (Routers, Switchs)
- \* Access to System equipments by SNMP and WMI
- \* Access to a network printer by SNMP
- \* Internet Access

### Remotely

We can also provide remote classes on our environment or directly connected to yours, to reduce cost or mix attendees which are located on different sites.