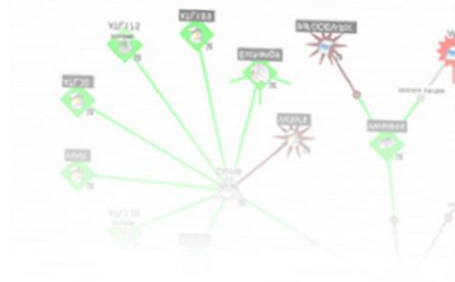
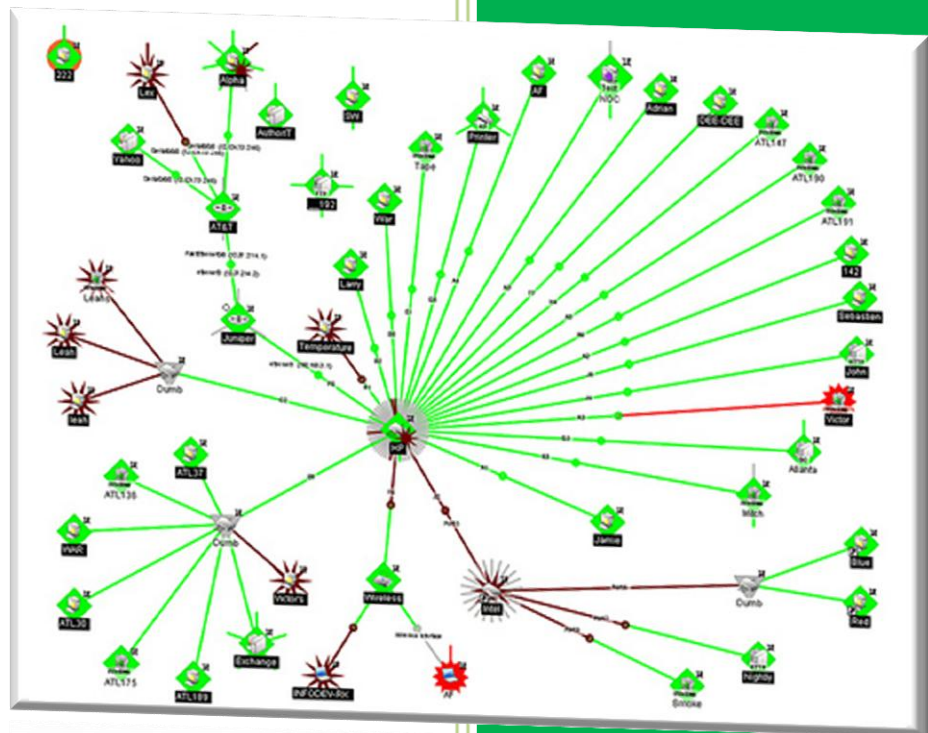


# How to implement Websphere Monitoring in WhatsUp Gold



## Introduction:

In order to maintain Websphere Server in good health, we needed a solution to monitor these. We would like to have views on global status of our servers, and to be alert in case of trouble. Some Monitoring Application software can offer this solution, but in order to centralize monitoring informations, we would like to monitor Websphere Server from WhatsUp Gold.

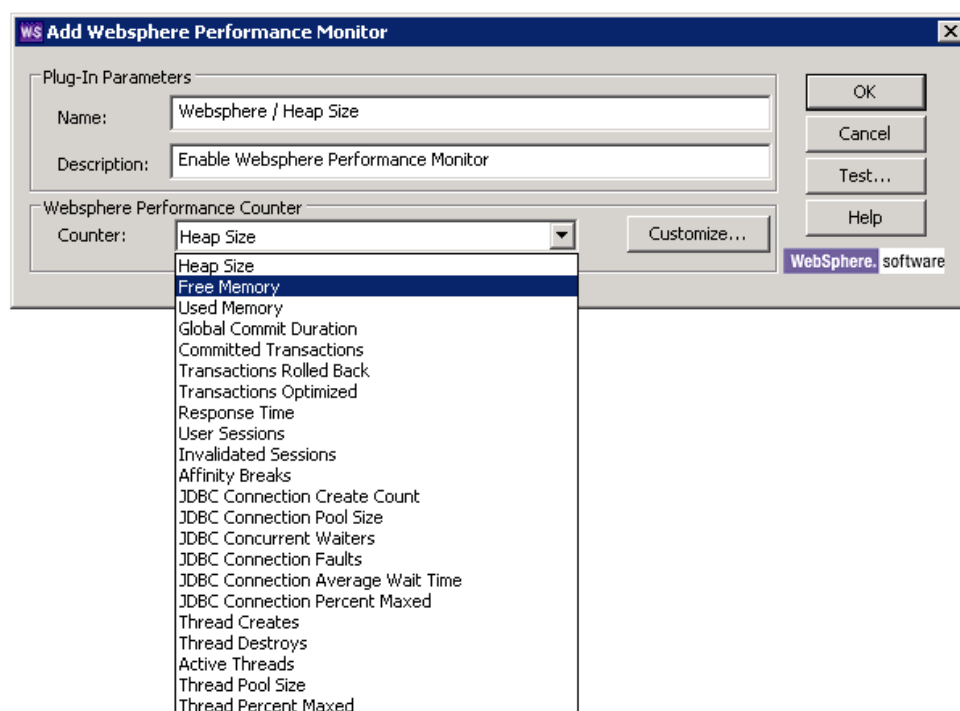
Thus, we will describe in this document how to implement Websphere monitoring in a WhatsUp Gold console. First, Websphere performances monitor which allows checking some performance counters, and active monitor to alert in case of trouble.

## Performance counters:

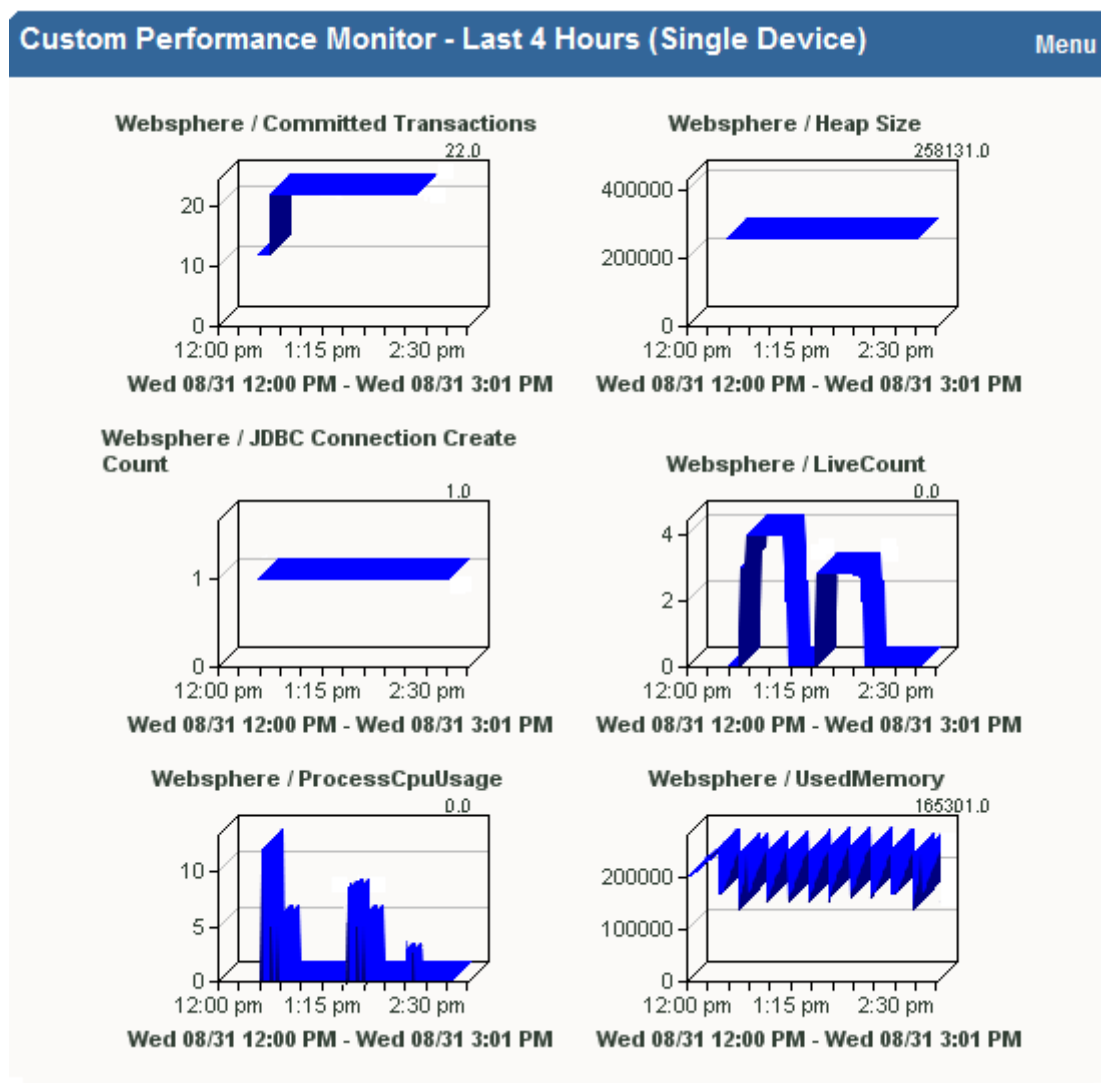
The Websphere Performance Monitor generates some performance counters and graphs from different Websphere parameters. This allows viewing global status of your Websphere environment and statistics on important parameters. This tool offers some pre-configured counters, but you can configure your own counters thanks to customize menu.

In the following example, we configured some performance monitor on a Websphere server.

### Pre-defined counters



## Some performances counters

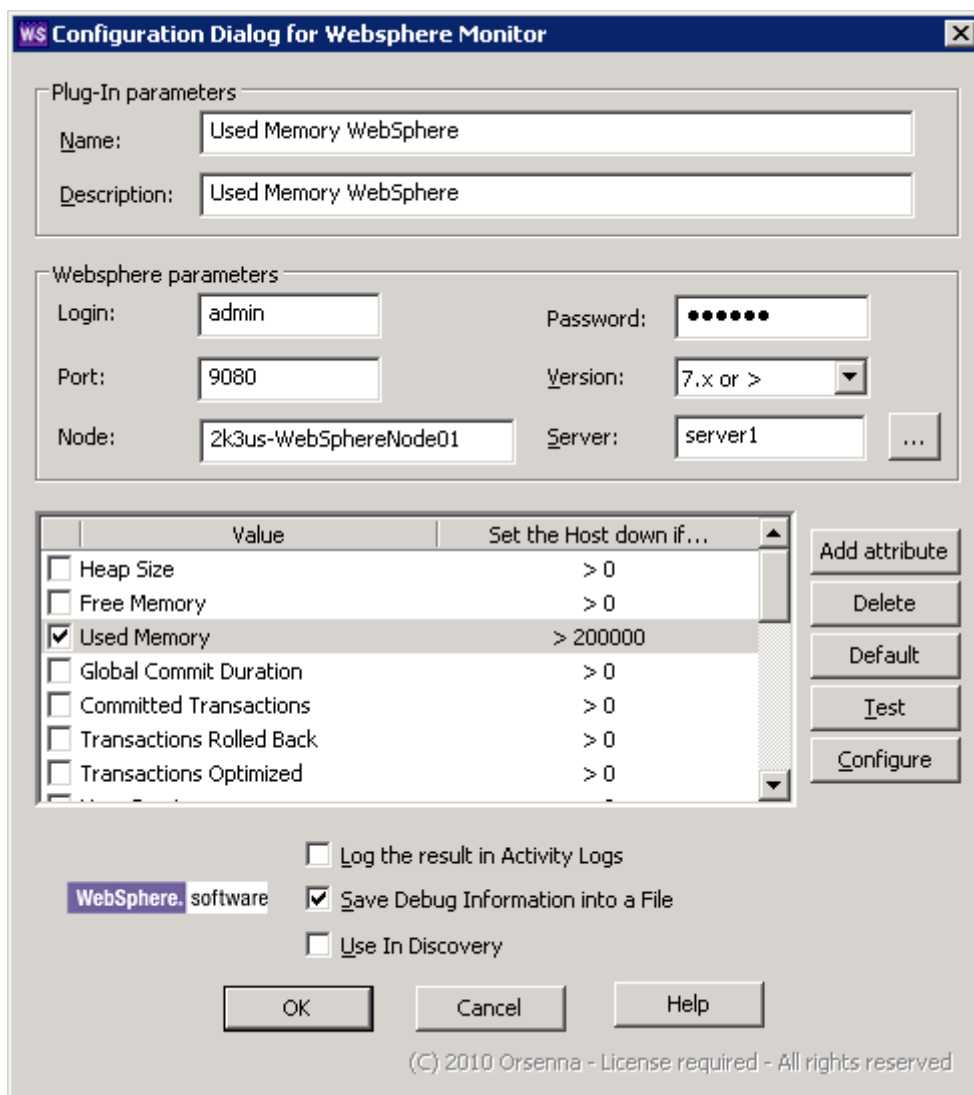


This monitor allows measuring some parameters of Websphere server and offers a global status of your environment. In the second part we will describe the Active Monitor which allows implementing alert thresholds. This tool will alert administrator in case of trouble in the Websphere environment.

## Websphere Active Monitor:

You can access the same counters in the Active Monitor. However, it allows implementing alert threshold on each counter. Therefore, it will alert the network administrator if a result data exceed the threshold. In the following example we configured a used memory monitor, with an alert threshold equal to 200 MB.

### Active Monitor / Used Memory



**WS Configuration Dialog for Websphere Monitor**

Plug-In parameters

Name:

Description:

Websphere parameters

Login:  Password:

Port:  Version:

Node:  Server:  ...

|                                     | Value                    | Set the Host down if... |
|-------------------------------------|--------------------------|-------------------------|
| <input type="checkbox"/>            | Heap Size                | > 0                     |
| <input type="checkbox"/>            | Free Memory              | > 0                     |
| <input checked="" type="checkbox"/> | Used Memory              | > 200000                |
| <input type="checkbox"/>            | Global Commit Duration   | > 0                     |
| <input type="checkbox"/>            | Committed Transactions   | > 0                     |
| <input type="checkbox"/>            | Transactions Rolled Back | > 0                     |
| <input type="checkbox"/>            | Transactions Optimized   | > 0                     |

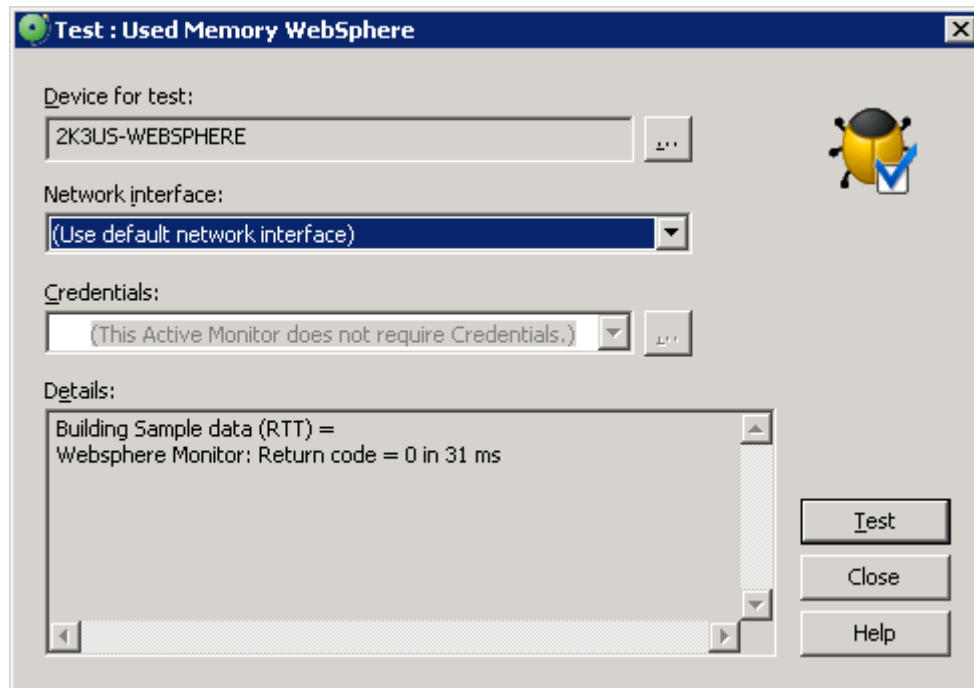
☐ Log the result in Activity Logs

☒ Save Debug Information into a File

☐ Use In Discovery

(C) 2010 Orsenna - License required - All rights reserved

### Test Result



With these two Monitors, WhatsUp is a complete solution to monitor WebSphere Server. These allow obtaining global status of your environment and alerting in case of trouble. Websphere is available in last version of WhatsUp Companion. You can obtain more information at:

<http://www.orsenna.com/store>

---